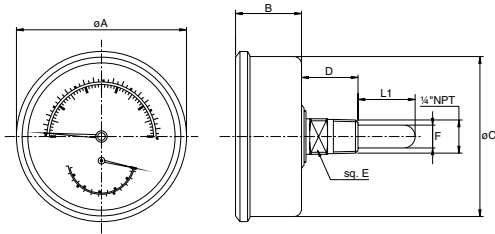




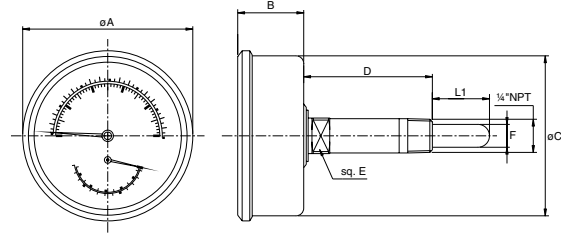
Sizes Series 4104

4104 back connection - 1/4"NPT short



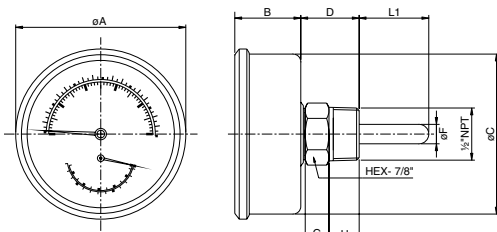
Size	A	B	C	D	E	F	L1
2 1/2 - stem 10	2.64	1.02	2.50	0.89	0.55	0.35	0.94
3 1/4 - stem 10	3.31	1.06	3.15	0.89	0.55	0.35	0.94
2 1/2 - stem 20	2.64	1.02	2.50	0.89	0.55	0.35	2.20
3 1/4 - stem 20	3.31	1.06	3.15	0.89	0.55	0.35	2.20
63 - stem 10	67	26	63	22.5	14	8.5	24
80 - stem 10	84	27	80	22.5	14	8.5	24
63 - stem 20	67	26	63	22.5	14	8.5	56
80 - stem 20	84	27	80	22.5	14	8.5	56

4104 back connection - 1/4"NPT long



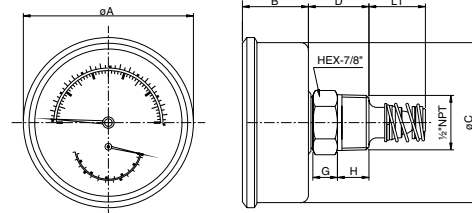
Size	A	B	C	D	E	F	L1
2 1/2 - stem 30	2.64	1.02	2.50	2.00	0.55	0.35	0.94
3 1/4 - stem 30	3.31	1.06	3.15	2.00	0.55	0.35	0.94
2 1/2 - stem 40	2.64	1.02	2.50	2.00	0.55	0.35	1.63
3 1/4 - stem 40	3.31	1.06	3.15	2.00	0.55	0.35	1.63
63 - stem 30	67	26	63	52	14	8.5	24.0
80 - stem 30	84	27	80	52	14	8.5	24.0
63 - stem 40	67	26	63	52	14	8.5	41.5
80 - stem 40	84	27	80	52	14	8.5	41.5

4104 back connection - 1/2"NPT



Size	A	B	C	D	F	G	H	L1
2 1/2 - stem 50	2.64	1.02	2.50	1.10	0.35	0.43	0.55	0.70
3 1/4 - stem 50	3.31	1.06	3.15	1.10	0.35	0.43	0.55	0.70
2 1/2 - stem 70	2.64	1.02	2.50	1.10	0.35	0.43	0.55	2.00
3 1/4 - stem 70	3.31	1.06	3.15	1.10	0.35	0.43	0.55	2.00
2 1/2 - stem 80	2.64	1.02	2.50	1.10	0.35	0.43	0.55	2.65
3 1/4 - stem 80	3.31	1.06	3.15	1.10	0.35	0.43	0.55	2.65
63 - stem 50	67	26	63	28	8.5	11	14	18.0
80 - stem 50	84	27	80	28	8.5	11	14	18.0
63 - stem 70	67	26	63	28	8.5	11	14	51.0
80 - stem 70	84	27	80	28	8.5	11	14	51.0
63 - stem 80	67	26	63	28	8.5	11	14	67.5
80 - stem 80	84	27	80	28	8.5	11	14	67.5

4104 back connection with self closing valve



Size	A	B	C	D	E	F	L1
2 1/2 - stem 60	2.64	1.02	2.50	1.06	0.43	0.55	0.87
3 1/4 - stem 60	3.31	1.06	3.15	1.06	0.43	0.55	0.87
63 - stem 60	67	26	63	27	11	14	22
80 - stem 60	84	27	80	27	11	14	22

