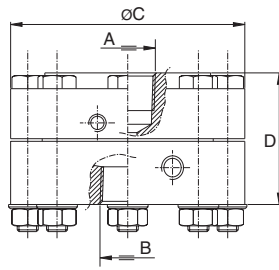




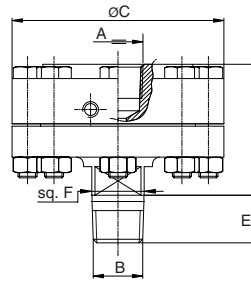
Sizes series 05-200 / 05-500

05-200 Threaded female process connection 15-2500 psi



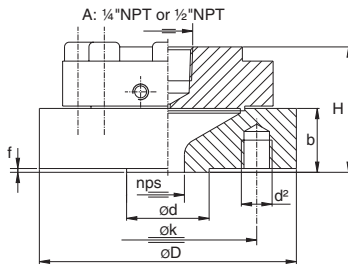
	A	B	C	D
inch	1/2"NPT	1/2"NPT	3.50	2.05
mm	1/2"NPT	1/2"NPT	89	52

05-200 Threaded male process connection 15-2500 psi



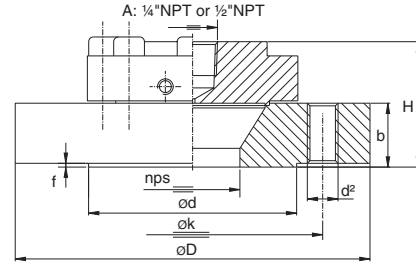
	A	B	C	D	E	F
inch	1/2"NPT	1/2"NPT	3.50	2.17	0.79	0.87
mm	1/2"NPT	1/2"NPT	89	55	20	22

05-500 flanged process connection ANSI B 16.5



DN	Class	D	k	d	b	f	d ² (UNC)	H
1/2"	150	3.50	2.38	1.37	1.10	0.06	4 x 1/2"	2.20
1/2"	300	3.75	2.62	1.38	1.02	0.06	4 x 1/2"	2.13
1/2"	400/600	3.75	2.62	1.38	1.22	0.25	4 x 1/2"	2.32
1/2"	900/1500	4.75	3.25	1.38	1.50	0.25	4 x 3/4"	2.60
3/4"	150	3.88	2.75	1.69	0.98	0.06	4 x 1/2"	2.09
3/4"	300	4.62	3.25	1.69	1.06	0.06	4 x 5/8"	2.17
3/4"	400/600	4.62	3.25	1.69	1.26	0.25	4 x 5/8"	2.36
3/4"	900/1500	5.12	3.50	1.69	1.50	0.25	4 x 3/4"	2.60
1"	150	4.25	3.12	2.00	0.90	0.06	4 x 1/2"	2.00
1"	300	4.88	3.50	2.00	0.94	0.06	4 x 5/8"	2.17
1"	400/600	4.88	3.50	2.00	1.26	0.25	4 x 5/8"	2.36
1"	900/1500	5.88	4.00	2.00	1.61	0.25	4 x 7/8"	2.72
1 1/2"	150	5.00	3.88	2.88	0.94	0.06	4 x 1/2"	2.05
1/2"	150	89.0	60.3	34.9	28	1.6	4 x 1/2"	56
1/2"	300	95.0	66.7	34.9	26	1.6	4 x 1/2"	54
1/2"	400/600	95.0	66.7	34.9	31	6.3	4 x 1/2"	59
1/2"	900/1500	120.6	82.5	34.9	38	6.3	4 x 3/4"	66
3/4"	150	98.4	69.8	42.9	25	1.6	4 x 1/2"	53
3/4"	300	117.5	82.5	42.9	27	1.6	4 x 5/8"	55
3/4"	400/600	117.5	82.5	42.9	32	6.3	4 x 5/8"	60
3/4"	900/1500	130.0	88.9	42.9	38	6.3	4 x 3/4"	66
1"	150	108.0	79.4	50.8	23	1.6	4 x 1/2"	51
1"	300	124.0	88.9	50.8	27	1.6	4 x 5/8"	55
1"	400/600	124.0	88.9	50.8	32	6.3	4 x 5/8"	60
1"	900/1500	149.0	101.6	50.8	41	6.3	4 x 7/8"	69
1 1/2"	150	127.0	98.4	73.0	24	1.6	4 x 1/2"	52

05-500 flanged process connection ANSI B 16.5



DN	Class	D	k	d	b	f	d ² (UNC)	H
1 1/2"	300	6.12	4.50	2.88	0.81	0.06	4 x 3/4"	1.93
1 1/2"	400/600	6.12	4.50	2.88	1.13	0.25	4 x 3/4"	2.24
1 1/2"	900/1500	7.00	4.88	2.88	1.50	0.25	4 x 1"	2.60
1 1/2"	300	155.4	114.3	73	20.6	1.6	4 x 3/4"	49
1 1/2"	400/600	155.4	114.3	73	28.7	6.3	4 x 3/4"	57
1 1/2"	900/1500	178.0	124.0	73	38.1	6.3	4 x 1"	66

