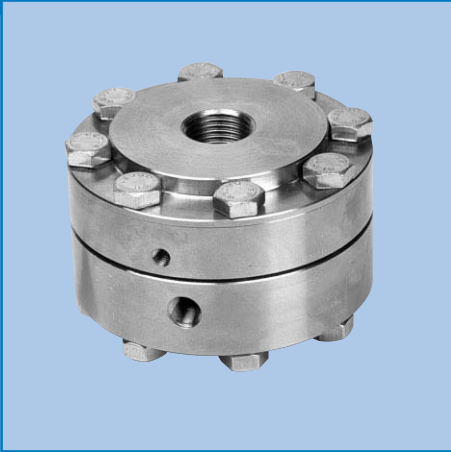




Series 05-200

Series 05-500



Diaphragm seal

Series 05-200 Threaded Process Connection

Series 05-500 Flanged Process connection

ENFM diaphragm seals are suitable to protect a pressure instrument or transmitter from contaminated, corrosive, hot or viscous process media.

Standard seal specifications

Pressure rating:	2500 psi for series 05-200 150# or 300# ect based on flange rating
Execution	
Instrument connection:	1/2" NPT
Top housing:	stainless steel AISI 316
Diaphragm:	Welded to top housing AISI 316
Bottom housing	Stainless steel AISI 316
Process Connection	Series 05-200: 1/2" NPT male or female Series 05-500: flanged sizes 1/2", 3/4", 1", class 150# , 300 #, 600# or 1500# raised face per ASME/ANSI B16.5 stainless steel
Nuts and Bolts	

05-200

Pressure rating	15-2500 psi
Instrument connection	1/2"NPT
Upperpart,Diaphragm & Bottom part all 316 ss	Series 05-200
Article number	O116511
Process connection	
1/2"NPT female	88214B
1/2"NPT male	87214B

05-500

Top housing, diaphragm and bottom housing stainless steel 316 Series 05-500			
Article number		O216511	O216511
Instrument connection		1/4"NPT	1/2"NPT
Flange size	ANSI B 16.5		
	Class		
1/2"	150	11113b	11114b
1/2"	300	21113b	21114b
1/2"	600	41113b	41114b
1/2"	1500	61113b	61114b
3/4"	150	12113b	12114b
3/4"	300	22113b	22114b
3/4"	600	42113b	42114b
3/4"	1500	62113b	62114b
1"	150	13113b	13114b
1"	300	23113b	23114b
1"	600	43113b	43114b
1"	1500	63113b	63114b

Options:

Instrument connection:	G 1/2" female
Toppart:	Carbon steel
Process connection:	G 1/2" female or male, other threaded connections.
Diaphragm:	Stainless steel AISI 316 teflon coated, Monel 400, Hastelloy B, Hastelloy C, Tantalum
Bottom housing:	Stainless steel AISI 316 teflon lined, Monel 400, Hastelloy B, Hastelloy C, Flange 316 ss with tantalum lining, flush connection 1/8"NPT