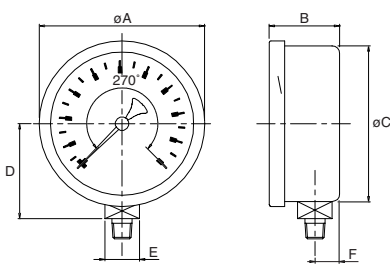




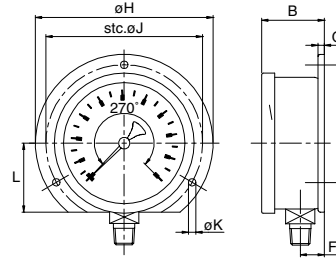
# Sizes and weights series 2510

### 2511 bottom



Size	A	B	C	D	E	F	Wght.
2 1/2	2.68	1.50	2.48	1.52	0.55	0.39	0.465
4	4.13	1.79	3.90	1.24	0.87	0.67	1.260
63	68	38.0	63	38.5	14	10	0.210
100	105	45.5	99	63.0	22	17	0.570

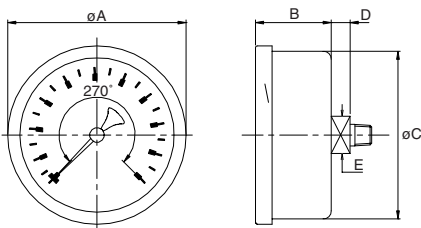
### 2512 backflange st. steel



for other measurements see 2511

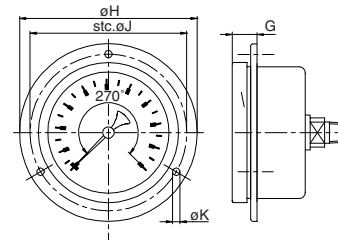
Size	B	F	G	H	J	K	L	Wght.
2 1/2	1.56	0.45	0.12	3.35	2.95	0.14	1.30	0.510
4	1.93	0.77	0.16	5.20	4.57	0.20	2.05	1.415
63	39.5	11.5	3	85	75	3.6	33	0.230
100	49.0	19.5	4	132	116	5.0	52	0.640

### 2514 centerback



Size	A	B	C	D	E	Wght.
2 1/2	2.68	1.50	2.48	0.28	0.55	0.445
4	4.13	1.46	3.90	0.67	0.87	0.970
63	68	38	63	7	14	0.200
100	105	37	99	17	22	0.440

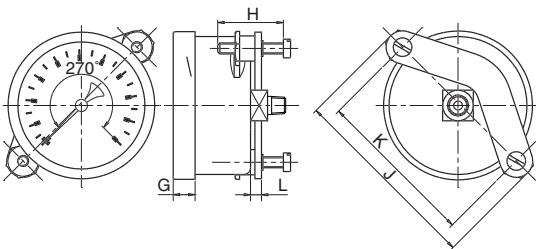
### 2516 frontflange



for other measurements see 2514

Size	G	H	J	K	Wght.
2 1/2	0.51	3.35	2.95	0.14	0.485
4	0.53	5.20	4.57	0.19	1.125
63	13.0	85	75	3.6	0.220
100	13.5	132	116	4.8	0.510

### 2517 U-clamp steel, zinc plated



for other measurements see 2514

Size	G	H	J	K	L	Wght.
2 1/2	0.39	1.18	3.48	2.89	0.20	0.565
63	10	30	88.5	73.5	5	0.255

