

Series 5210

Liquid Filled Mining Gauges

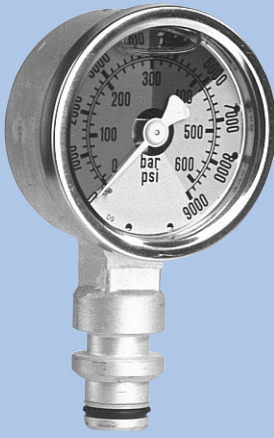
Copper Alloy wetted parts

Cast Brass case

Case size 2"

Standard gauge specifications

- Case:** Brass, cast one piece design
- Bezel:** Crimped stainless steel
- Dial:** White brass with black scales and red, green and yellow segments
- Pointer:** White brass
- Window:** heavy-duty acrylic
- Bourdon tube:** Helical beryllium copper
- Connection:** Brass steck - o - connection, at 3, 6, 9 or 12 o'clock with viton o-ring and delrin back-up
- Movement:** Brass
- Liquid filling:** Glycerin
- Accuracy:** 1.6 % of span



Series	5211	
Case Size	2"	
Connection Size	steck-o-connection	
Scale	psi/bar	
Article number	RV142A1Z	
Pressure Range Code	Connection	
0-9000 psi	3 o'clock	333ke3
0-9000 psi	6 o'clock	333ke6
0-9000 psi	9 o'clock	333ke9
0-9000 psi	12 o'clock	333ke12