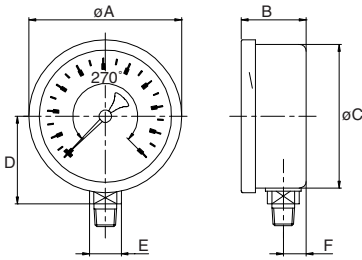


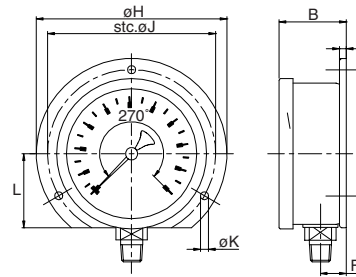
# Sizes and weights series 7510R / 7520R

## 7511R / 7521R bottom



Size	A	B	C	D	E	F	Wght.
2 1/2	2.68	1.17	2.48	1.52	0.55	0.39	0.345
4	4.13	1.83	3.90	2.48	0.87	0.67	1.190
6	6.22	2.17	5.85	3.62	0.87	0.77	2.260
63	68	29.7	63.0	38.5	14	10.0	0.155
100	105	46.5	99.0	63.0	22	17.0	0.540
150	158	55.0	148.5	92.0	22	19.5	1.025

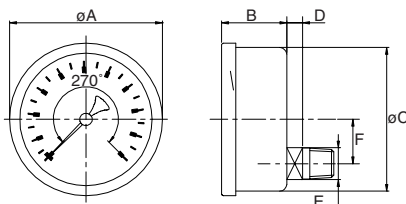
## 7512R / 7522R backflange st. steel



for other measurements see 7511/7521

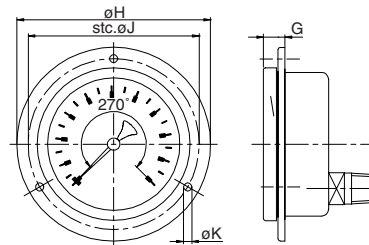
Size	B	F	G	H	J	K	L	Wght.
2 1/2	1.23	0.45	0.12	3.35	2.95	0.14	1.30	0.390
4	1.93	0.77	0.16	5.20	4.57	0.20	2.05	1.345
6	2.34	0.94	0.24	7.32	6.61	0.24	3.07	2.680
63	31.2	11.5	3	85	75	3.6	33	0.175
100	49.0	19.5	4	132	116	5.0	52	0.610
150	59.5	24.0	6	186	168	6.0	78	1.215

## 7515R / 7525R lowerback



Size	A	B	C	D	E	F	Wght.
2 1/2	2.67	1.15	2.48	0.28	0.55	0.77	0.345
4	4.13	1.89	3.90	0.43	0.87	1.31	1.280
6	6.22	2.17	5.85	0.67	0.87	2.07	2.495
63	68	29.2	63.0	7	14	19.5	0.155
100	105	48.0	99.0	11	22	33.4	0.580
150	158	55.0	148.5	17	22	52.5	1.130

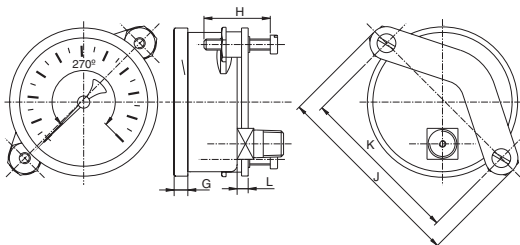
## 7518R / 7528R frontflange



for other measurements see 7515/7525

Size	G	H	J	K	Wght.
2 1/2	0.47	3.35	2.95	0.14	0.400
4	0.53	5.20	4.57	0.19	1.425
6	0.83	7.32	6.61	0.24	2.910
63	12.0	85	75	3.6	0.180
100	13.5	132	116	4.8	0.645
150	21.0	186	168	6.0	1.320

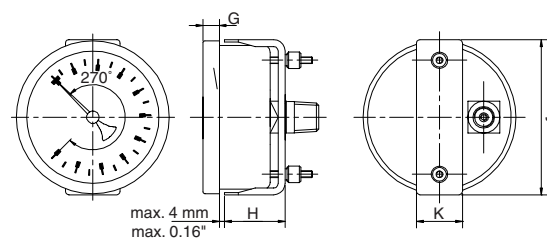
## 7519R / 7529R U-clamp steel, zinc plated



for other measurements see 7515/7525

Size	G	H	J	K	L	Wght.
2 1/2	0.24	1.18	3.48	2.89	0.20	0.465
63	6	30	88.5	73.5	5	0.210

## 7519R / 7529R U-clamp steel, zinc plated



max. 4 mm  
max. 0.16"

for other measurements see 7515/7525

Size	G	H	J	K	Wght.
4	0.39	1.73	4.17	0.98	1.430
6	0.51	1.99	6.61	0.98	3.230
100	10	44	106	25	0.650
150	13	49	168	25	1.890

