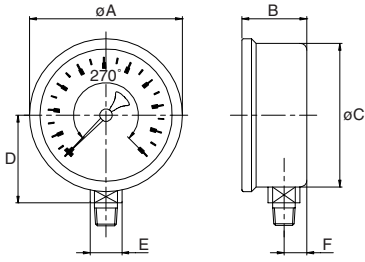


Sizes and weights series 6000A/6210A



6001A/6211A bottom

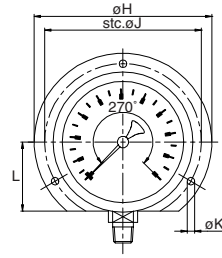


Size	A	B	C	D	E	F	Wght.	
							dry	filled
4	4.09	1.16	3.90	2.24	0.55	0.39	0.555	1.015
100	104	29.5	99	57.0	14	10	0.250	0.460

inch
mm

lb
kg

6212A backflange st. steel



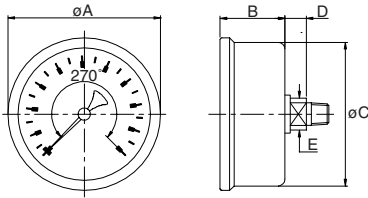
for other measurements see 6211A

Size	B	F	G	H	J	K	L	Wght.	
								dry	filled
4	1.26	0.49	0.16	5.20	4.57	0.20	2.05	1.205	2.205
100	32.0	12.5	4	132	116	5.0	52	0.545	0.985

inch
mm

lb
kg

6004A/6214A centerback

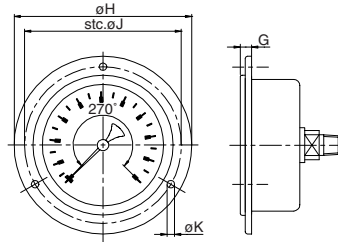


Size	A	B	C	D	E	F	Wght.	
							dry	filled
4	4.09	1.18	3.90	0.41	0.55	0.39	0.475	0.970
100	104	30.0	99	10.5	14	10	0.215	0.440

inch
mm

lb
kg

6006A/6216A frontflange



for other measurements see 6004/6214A

Size	G	H	J	K	Wght.	
					dry	filled
4	0.37	5.20	4.57	0.19	0.665	1.170
100	9.5	132	116	4.8	0.300	0.530

inch
mm

lb
kg