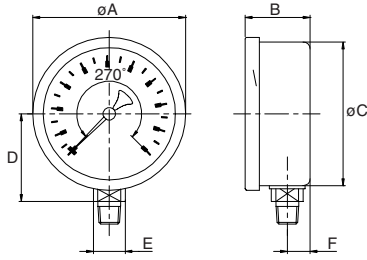


Sizes and weights series 9510

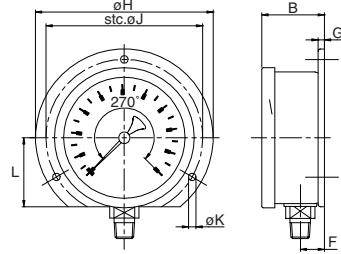


9511 bottom



Size	A	B	C	D	E	F	Wght.
6	6.22	2.17	5.85	3.62	0.87	0.77	2.260
150	158	55.0	148.5	92	22	19.5	1.025

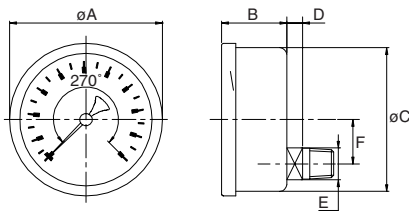
9512 backflange st. steel



for other measurements see 9511

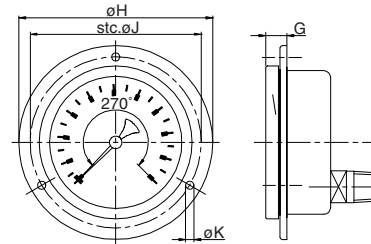
Size	B	F	G	H	J	K	L	Wght.
6	2.34	0.94	0.24	7.32	6.61	0.24	3.07	2.680
150	59.5	24.0	6	186	168	6.0	78	1.215

9515 lowerback



Size	A	B	C	D	E	F	Wght.
6	6.22	2.17	5.85	0.67	0.87	2.07	2.491
150	158	55	148.5	17	22	52.5	1.130

9518 frontflange



for other measurements see 9515

Size	G	H	J	K	Wght.
6	0.83	7.32	6.61	0.24	2.910
150	21.0	186	168	6.0	1.320