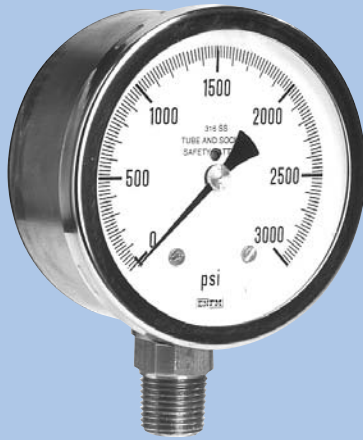


Series 8620



Safety Pattern Stainless Steel Pressure Gauges

Solid front blow out back safety pattern case
Stainless steel wetted parts
Case size 2 1/2", 4" & 6"

ENFM's stainless steel pressure gauges are suitable for a medium, which does not clog connection port or corrode stainless steel. These gauges are commonly used on severe service applications requiring maximum operator safety. These gauges have solid front blow out back safety cases. **The lower mounts are field fillable.**

Standard gauge specifications

- Case:** Stainless steel AISI 304 with solid barrier between dial plate and measuring unit element complete with blow out back plate.
- Bezel:** Stainless steel AISI 304 polished bayonet ring
- Dial:** White aluminum with black scales
- Pointer:** Black aluminum, adjustable
- Window:** Laminated safety glass
- Bourdon tube:** ≤ 600 psi : "C" shaped AISI 316,
> 600 psi : helical AISI 316
- Connection:** Stainless steel AISI 316
- Movement:** Stainless steel with mechanical underload/overload stop (4" & 6")
- Weather protection:** IP 54
- Accuracy:** 1.6 % of span (2 1/2")
1.0 % of span (4" & 6") ASME B40.1 Grade 1A

Series	8621	8621	8621	8625	8625	8625
Case Size	2 1/2"	4"	6"	2 1/2"	4"	6"
Connection Size	1/4" NPT	1/2" NPT	1/2" NPT	1/4" NPT	1/2" NPT	1/2" NPT
Scale	psi	psi	psi	psi	psi	psi
Article number	SW266A3E	SW266A5H	SW266A6H	SW266G3E	SW266G5H	SW266G6H
Pressure Range Code						
-30"Hg/0	000vb	000vb	000vb	000vb	000vb	000vb
-30"Hg/0/15psi	201vb	201vb	201vb	201vb	201vb	201vb
-30"Hg/0/30 psi	203vb	203vb	203vb	203vb	203vb	203vb
-30"Hg/0/60 psi	205vb	205vb	205vb	205vb	205vb	205vb
-30"Hg/0/100 psi	208vb	208vb	208vb	208vb	208vb	208vb
-30"Hg/0/150 psi	210vb	210vb	210vb	210vb	210vb	210vb
-30"Hg/0/200 psi	212vb	212vb	212vb	212vb	212vb	212vb
0-15 psi	301vb	301vb	301vb	301vb	301vb	301vb
0-30 psi	303vb	303vb	303vb	303vb	303vb	303vb
0-60 psi	306vb	306vb	306vb	306vb	306vb	306vb
0-100 psi	309vb	309vb	309vb	309vb	309vb	309vb
0-160 psi	312vb	312vb	312vb	312vb	312vb	312vb
0-200 psi	314vb	314vb	314vb	314vb	314vb	314vb
0-300 psi	317vb	317vb	317vb	317vb	317vb	317vb
0-400 psi	319vb	319vb	319vb	319vb	319vb	319vb
0-500 psi	320vb	320vb	320vb	320vb	320vb	320vb
0-600 psi	321vb	321vb	321vb	321vb	321vb	321vb
0-1000 psi	323vb	323vb	323vb	323vb	323vb	323vb
0-1500 psi	324vb	324vb	324vb	324vb	324vb	324vb
0-2000 psi	325vb	325vb	325vb	325vb	325vb	325vb
0-3000 psi	327vb	327vb	327vb	327vb	327vb	327vb
0-4000 psi	329vb	329vb	329vb	329vb	329vb	329vb
0-5000 psi	331vb	331vb	331vb	331vb	331vb	331vb
0-6000 psi	332vb	332vb	332vb	332vb	332vb	332vb
0-10000 psi	334vb	334vb	334vb	334vb	334vb	334vb
0-15000 psi	335vb	335vb	335vb	335vb	335vb	335vb
0-20000 psi		336vb	336vb	-	336vb	336vb
Mounting Options						
Frontflange 8628	-	-	-	SW266H3E	SW266H5H	SW266H6H

Items shown in **bold** are normally stocked items
Options: Internals of monel (SW666...), only 4" & 6".

To order, add pressure range code after article number, example: **SW266A3E000vb**