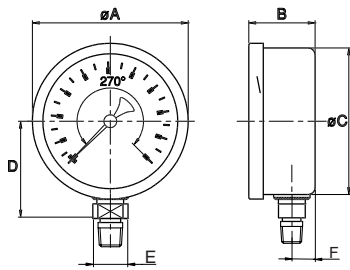


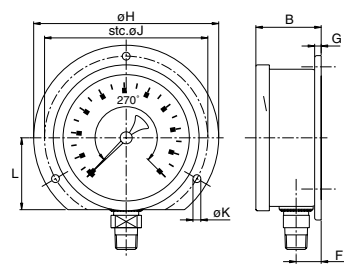
## Sizes and weights series 7770

### 7771 bottom



Size	A	B	C	D	E	F	Wght.
2 1/2	2.68	1.17	2.48	1.61	0.55	0.39	0.510
4	4.13	1.83	3.90	2.64	0.87	0.67	1.845
63	68	29.7	63.0	41	14	10	0.230
100	105	46.5	99.0	63	22	17	0.835

### 7772 backflange st. steel



for other measurements see 7771

Size	B	F	G	H	J	K	L	Wght.
2 1/2	1.23	0.45	0.12	3.35	2.95	0.14	1.30	0.555
4	1.93	0.77	0.16	5.20	4.57	0.20	2.05	1.995
63	31.2	11.5	3	85	75	3.6	33	0.250
100	49.0	19.5	4	132	116	5.0	52	0.905

