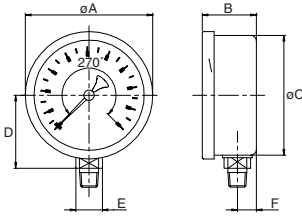


Sizes and weights series 7720

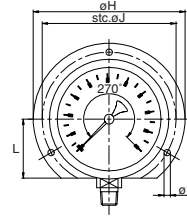


7721 bottom



Size	A	B	C	D	E	F	Wght.
2 1/2	2.68	1.17	2.48	1.52	0.55	0.39	0.510
4	4.13	1.83	3.90	2.48	0.87	0.67	1.845
6	6.22	2.17	5.85	3.62	0.87	0.77	4.410
63	68	29.7	63.0	38.5	14	10.0	0.230
100	105	46.5	99.0	63.0	22	17.0	0.835
150	158	55.0	148.5	92.0	22	19.5	2.000

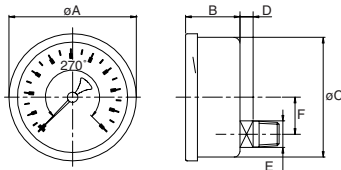
7722 backflange st. steel



for other measurements see 7721

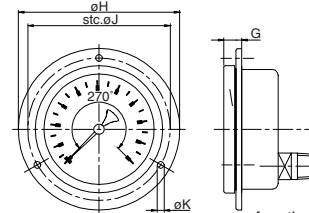
Size	B	F	G	H	J	K	L	Wght.
2 1/2	1.23	0.45	0.12	3.35	2.95	0.14	1.30	0.555
4	1.93	0.77	0.16	5.20	4.57	0.20	2.05	1.995
6	2.34	0.94	0.24	7.32	6.61	0.24	3.07	4.895
63	31.2	11.5	3	85	75	3.6	33	0.250
100	49.0	19.5	4	132	116	5.0	52	0.905
150	59.5	24.0	6	186	168	6.0	78	2.220

7725 lowerback



Size	A	B	C	D	E	F	Wght.
2 1/2	2.67	1.15	2.48	0.28	0.55	0.77	0.510
4	4.13	1.89	3.90	0.43	0.87	1.31	1.965
6	6.22	2.17	5.85	0.67	0.87	2.07	4.850
63	68	29.2	63.0	7	14	19.5	0.230
100	105	48.0	99.0	11	22	33.4	0.890
150	158	55.0	148.5	17	22	52.5	2.200

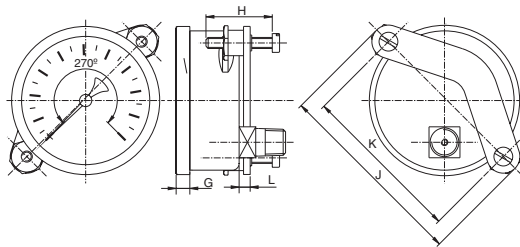
7728 frontflange



for other measurements see 7725

Size	G	H	J	K	Wght.
2 1/2	0.43	3.35	2.95	0.14	0.565
4	0.53	5.20	4.57	0.19	2.105
6	0.83	7.32	6.61	0.24	5.295
63	11.0	85	75	3.6	0.255
100	13.5	132	116	4.8	0.955
150	21.0	186	168	6.0	2.400

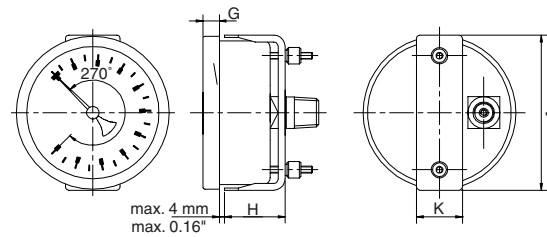
7729 U-clamp steel, zinc plated



for other measurements see 7725

Size	G	H	J	K	L	Wght.
2 1/2	0.24	1.18	3.48	2.89	0.20	0.630
63	6	30	88.5	73.5	5	0.285

7729 U-clamp steel, zinc plated



max. 4 mm
max. 0.16"

for other measurements see 7725

Size	G	H	J	K	Wght.
4	0.39	1.73	4.17	0.98	1.430
6	0.51	1.99	6.61	0.98	3.730
100	10	44	106	25	0.650
150	13	49	168	25	1.690