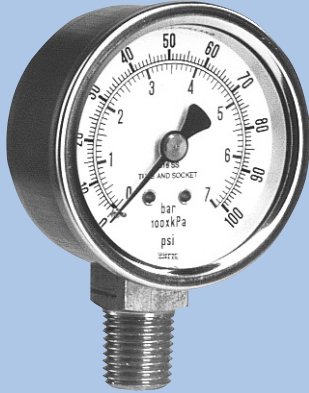


# Series 7020



# Stainless Steel Pressure Gauges

Stainless steel wetted parts  
 Stainless steel case, dry design  
 Case size 2"

ENFM's small stainless steel pressure gauges are suitable for a medium, which does not clog connection port or corrode stainless steel. These gauges are commonly used on heavy-duty service in industrial environments.

### Standard gauge specifications

<b>Case:</b>	Stainless steel AISI 304
<b>Bezel:</b>	Crimped Stainless steel AISI 304
<b>Dial:</b>	White aluminum with black and blue scales
<b>Pointer:</b>	Black aluminum
<b>Window:</b>	Acrylic
<b>Bourdon tube:</b>	≤ 600 psi : "C" shaped AISI 316,
<b>Connection:</b>	Stainless steel AISI 316
<b>Movement:</b>	Stainless steel
<b>Weather protection:</b>	IP 43
<b>Accuracy:</b>	2.5 % of span

<b>Series</b>	<b>7021</b>	<b>7021</b>
<b>Size</b>	<b>2"</b>	<b>2"</b>
<b>Connection Size</b>	<b>1/8"NPT</b>	<b>1/4"NPT</b>
<b>Scale</b>	<b>psi/bar/kPa</b>	<b>psi/bar/kPa</b>
<b>Article number</b>	<b>RD232A1B</b>	<b>RD232A1E</b>
<b>Pressure Range Code</b>		
-30"Hg/0	000kg	000kg
-30"Hg/0/15psi	201kg	201kg
-30"Hg/0/30 psi	203kg	203kg
-30"Hg/0/60 psi	205kg	205kg
-30"Hg/0/100 psi	208kg	208kg
-30"Hg/0/150 psi	210kg	210kg
-30"Hg/0/200 psi	212kg	212kg
0-15 psi	301kg	301kg
0-30 psi	303kg	303kg
0-60 psi	306kg	<b>306kg</b>
0-100 psi	309kg	<b>309kg</b>
0-160 psi	312kg	<b>312kg</b>
0-200 psi	314kg	<b>314kg</b>
0-300 psi	317kg	317kg
0-400 psi	319kg	319kg
0-500 psi	320kg	320kg
0-600 psi	321kg	321kg

Items shown in **bold** are normally stocked items