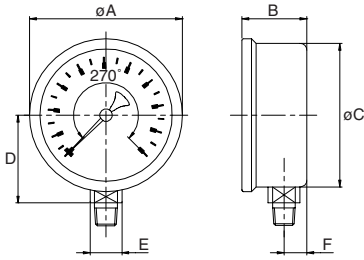


Sizes and weights series 6210

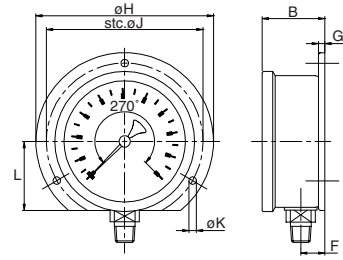


6211 bottom



Size	A	B	C	D	E	F	Wght.
4	4.09	1.16	3.90	2.24	0.55	0.39	1.015
100	104	29.5	99	57.0	14	10	0.460

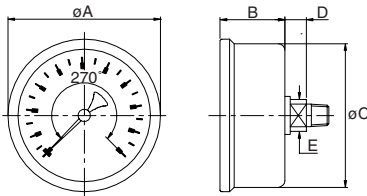
6212 backflange



for other measurements see 6211

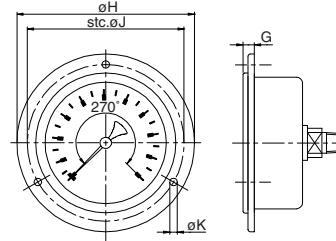
Size	B	F	G	H	J	K	L	Wght.
4	1.26	0.49	0.16	5.20	4.57	0.20	2.05	1.205
100	32.0	12.5	4	132	116	5.0	52	0.545

6214 centerback



Size	A	B	C	D	E	Wght.
4	4.09	1.18	3.90	0.41	0.55	0.970
100	104	30.0	99	10.5	14	0.440

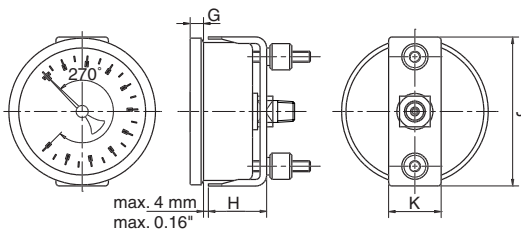
6216 frontflange



for other measurements see 6214

Size	G	H	J	K	Wght.
4	0.37	5.20	4.57	0.19	1.170
100	9.5	132	116	4.8	0.530

6217 U-clamp steel, zinc plated



max. 4 mm
max. 0.16"

for other measurements see 6214

Size	G	H	J	K	Wght.
4	0.24	1.16	4.13	0.98	1.125
100	6	29.5	105	25	0.510