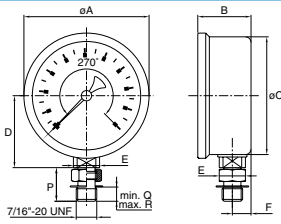


# Sizes and weights series 7210SAE

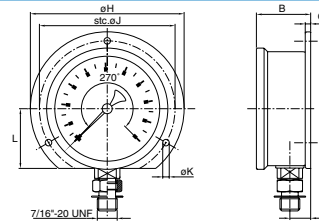


### 7211 bottom



	Size	A	B	C	D	E	F	P	Q	R	Wght.
inch	2 1/2	2.64	1.12	2.48	1.52	0.55	0.39	0.71	0.30	0.42	0.430
mm	63	67	28.5	63	38.5	14	10	18	7.6	10.7	0.195

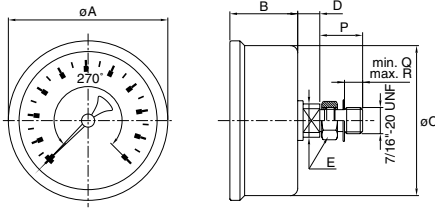
### 7212 backflange st. steel



for other measurements see 7211

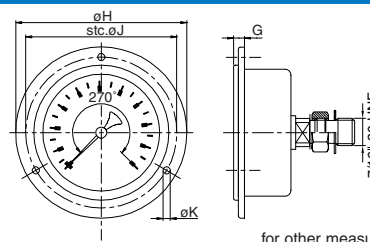
	Size	B	F	G	H	J	K	L	Wght.
inch	2 1/2	1.18	0.45	0.12	3.35	2.95	0.14	1.30	0.475
mm	63	30.0	11.5	3	85	75	3.6	33	0.215

### 7214 centerback



	Size	A	B	C	D	E	P	Q	R	Wght.
inch	2 1/2	2.64	1.10	2.48	0.37	0.55	0.71	0.30	0.42	0.410
mm	63	67	28	63	9.5	14	18	7.6	10.7	0.185

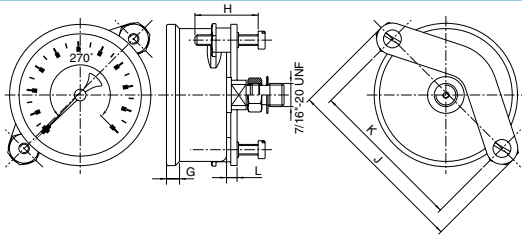
### 7216 frontflange



for other measurements see 7214

	Size	G	H	J	K	Wght.
inch	2 1/2	0.35	3.35	2.95	0.14	0.455
mm	63	9	85	75	3.6	0.205

### 7217 U-clamp steel, zinc plated



for other measurements see 7214

	Size	G	H	J	K	L	Wght.
inch	2 1/2	0.24	1.18	3.48	2.89	0.20	0.530
mm	63	6	30	88.5	73.5	5	0.240