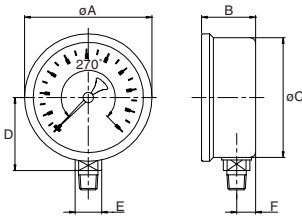


Sizes and weights series 7210

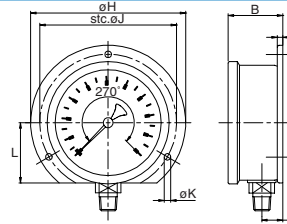


7211 bottom



Size	A	B	C	D	E	F	Wght.
2 1/2	2.64	1.12	2.48	1.52	0.55	0.39	0.430
4	4.09	1.77	3.90	2.48	0.87	0.67	1.810
63	67	28.5	68	38.5	14	10	0.195
100	104	45.0	99	63.0	22	17	0.820

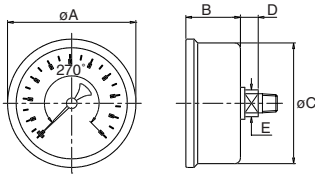
7212 backflange st. steel



for other measurements see 7211

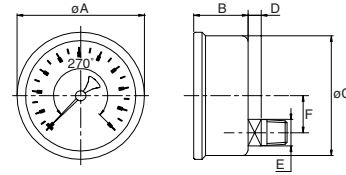
Size	B	F	G	H	J	K	L	Wght.
2 1/2	1.18	0.45	0.12	3.35	2.95	0.14	1.30	0.470
4	1.87	0.77	0.16	5.20	4.57	0.20	2.05	1.965
63	30.0	11.5	3	85	75	3.6	33	0.215
100	47.5	19.5	4	132	116	5.0	52	0.890

7214 centerback



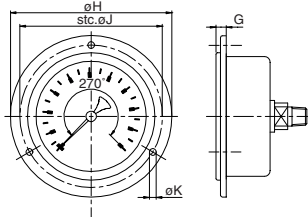
Size	A	B	C	D	E	Wght.
2 1/2	2.64	1.10	2.48	0.37	0.55	0.410
63	67	28.0	63	9.5	14	0.185

7215 lowerback



Size	A	B	C	D	E	F	Wght.
4	4.09	1.83	3.90	0.43	0.87	1.31	1.930
100	104	46.5	99	11	22	33.4	0.875

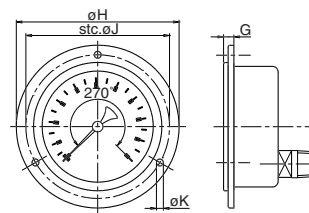
7216 frontflange



for other measurements see 7214

Size	G	H	J	K	Wght.
2 1/2	0.35	3.35	2.95	0.14	0.455
63	9	85	75	3.6	0.205

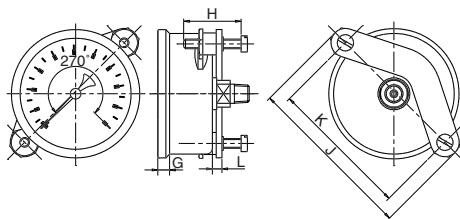
7218 frontflange



for other measurements see 7215

Size	G	H	J	K	Wght.
4	0.30	5.20	4.57	0.19	2.075
100	7.5	132	116	4.8	0.940

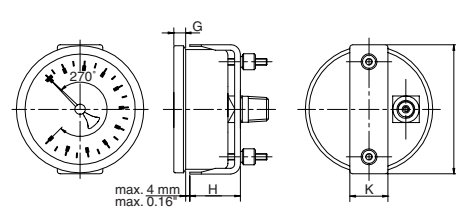
7217 U-clamp steel, zinc plated



for other measurements see 7214

Size	G	H	J	K	L	Wght.
2 1/2	0.24	1.18	3.48	2.89	0.20	0.530
63	6	30	88.5	73.5	5	0.240

7219 U-clamp steel, zinc plated



for other measurements see 7215

Size	G	H	J	K	Wght.
4	0.24	1.73	4.17	0.98	2.095
100	6	44	106	25	0.950