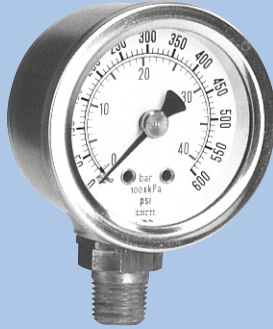


Series 7210



Liquid Filled Pressure Gauges

Copper Alloy wetted parts
Stainless steel case
Case size 1 1/2" & 2"

ENFM's small liquid filled pressure gauges are suitable for a medium, which does not clog connection port or corrode copper alloy. These gauges are commonly used on heavy-duty service in industrial environments.

Standard gauge specifications

- Case:** Stainless steel AISI 304 with filling plug
- Bezel:** Crimped stainless steel AISI 304
- Dial:** White aluminum with black and blue scales
- Pointer:** Black aluminum
- Window:** Acrylic
- Bourdon tube:** ≤ 600 psi : "C" shaped phosphor bronze,
> 600 psi : helical phosphor bronze
- Connection:** Brass with field removable .012 threaded snubber
- Movement:** Brass
- Liquid Filling:** Glycerin
- Weather protection:** IP 65
- Accuracy:** 1.6 % of span

Series	7211	7211	7211	7214	7214	7214
Case Size	1 1/2"	2"	2"	1 1/2"	2"	2"
Connection Size	1/8"NPT	1/8"NPT	1/4"NPT	1/8"NPT	1/8"NPT	1/4"NPT
Scale	psi/bar/kPa	psi/bar/kPa	psi/bar/kPa	psi/bar/kPa	psi/bar/kPa	psi/bar/kPa
Article number	RV132A0K	RV132A1K	RV132A1N	RV132C0K	RV132C1K	RV132C1N
Pressure Range Code						
-30"Hg/0	000kg	000kg	000kg	000kg	000kg	000kg
-30"Hg/0/15psi	201kg	201kg	201kg	201kg	201kg	201kg
-30"Hg/0/30 psi	203kg	203kg	203kg	203kg	203kg	203kg
-30"Hg/0/60 psi	205kg	205kg	205kg	205kg	205kg	205kg
-30"Hg/0/100 psi	208kg	208kg	208kg	208kg	208kg	208kg
-30"Hg/0/150 psi	210kg	210kg	210kg	210kg	210kg	210kg
-30"Hg/0/200 psi	212kg	212kg	212kg	212kg	212kg	212kg
0-15 psi	301kg	301kg	301kg	301kg	301kg	301kg
0-30 psi	303kg	303kg	303kg	303kg	303kg	303kg
0-60 psi	306kg	306kg	306kg	306kg	306kg	306kg
0-100 psi	309kg	309kg	309kg	309kg	309kg	309kg
0-160 psi	312kg	312kg	312kg	312kg	312kg	312kg
0-200 psi	314kg	314kg	314kg	314kg	314kg	314kg
0-300 psi	317kg	317kg	317kg	317kg	317kg	317kg
0-400 psi	319kg	319kg	319kg	319kg	319kg	319kg
0-500 psi	320kg	320kg	320kg	320kg	320kg	320kg
0-600 psi	321kg	321kg	321kg	321kg	321kg	321kg
0-1000 psi	323kg	323kg	323kg	323kg	323kg	323kg
0-1500 psi	324kg	324kg	324kg	324kg	324kg	324kg
0-2000 psi	325kg	325kg	325kg	325kg	325kg	325kg
0-3000 psi	327kg	327kg	327kg	327kg	327kg	327kg
0-4000 psi	329kg	329kg	329kg	329kg	329kg	329kg
0-5000 psi	331kg	331kg	331kg	331kg	331kg	331kg
0-6000 psi	332kg	332kg	332kg	332kg	332kg	332kg
Mounting Options						
Frontflange 7216	-	-	-	RV132D0K	RV132D1K	RV132D1N
U Clamp 7217	-	-	-	RV132F0K	RV132F1K	RV132F1N

Items shown in **bold** are normally stocked items

To order, add pressure range code after article number, example: **RV132A0K000kg**