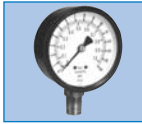


# Pressure Gauges

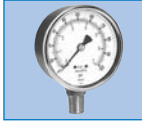
(for partnumber description, see opposite page)



**10 Series 6000**  
**Standard Pressure Gauges**  
 Copper Alloy wetted parts  
 Black steel case  
 Case size 1 1/2", 2", 2 1/2" & 4"



**14 Series 7010**  
**Standard Pressure Gauges**  
 Copper Alloy wetted parts  
 Stainless steel case  
 Case size 1 1/2", 2", & 2 1/2"



**16 Series 7110**  
**Field Fillable Pressure Gauges**  
 Copper alloy wetted parts  
 Stainless steel case  
 Case size 1 1/2", 2", 2 1/2" & 4"



**20 Series 7610**  
**Field Fillable Industrial Pressure Gauges**  
 Copper alloy wetted parts  
 Stainless steel case & bayonet ring  
 Case size 4" & 6"



**24 Series 7210**  
**Liquid Filled Pressure Gauges**  
 Copper alloy wetted parts  
 Stainless steel case  
 Case size 1 1/2", 2", 2 1/2" & 4"  
 SAE 7/16" - 20 Threads: Case size 2 1/2"



**30 Series 6210**  
**Liquid Filled Standard Pressure Gauges**  
 Copper alloy wetted parts  
 Stainless steel case  
 Case size 4"



**32 Series 7710**  
**Liquid Filled Industrial Pressure Gauges**  
 Copper alloy wetted parts  
 Stainless steel case & bayonet ring  
 Case size 4" & 6"



**34 Series 7020**  
**Stainless Steel Pressure Gauges**  
 Stainless steel wetted parts  
 Stainless steel case  
 Case size 2"



**36 Series 7120**  
**Field Fillable Stainless Steel Pressure Gauges**  
 Stainless steel wetted parts  
 Stainless steel case  
 Case size 2 1/2"



**38 Series 7620**  
**Field Fillable Stainless Steel Pressure Gauges**  
 Stainless steel wetted parts  
 Stainless steel case & bayonet ring  
 Case size 2 1/2", 4" & 6"



**40 Series 6220**  
**Liquid Filled Standard Pressure Gauges**  
 Stainless steel wetted parts  
 Stainless steel case  
 Case size 4"



**42 Series 7220**  
**Liquid Filled Stainless Steel Pressure Gauges**  
 Stainless steel wetted parts  
 Stainless steel case  
 Case size 2 1/2"



**44 Series 7720**  
**Liquid Filled Stainless Steel Pressure Gauges**  
 Stainless steel wetted parts  
 Stainless steel case & bayonet ring  
 Case size 2 1/2", 4" & 6"



**46 Series 7770**  
**Liquid Filled Stainless Steel Pressure Gauges**  
 Stainless steel wetted parts  
 Stainless steel case welded to connection  
 Case size 2 1/2" & 4"



**48 Series 8620**  
**Field Fillable Safety Pattern Stainless Steel Pressure Gauges**  
 Solid front blow out back safety pattern case  
 Stainless steel wetted parts  
 Case size 2 1/2", 4" & 6"



**50 Series 8720**  
**Liquid Filled Safety Pattern Pressure Gauges**  
 Solid front blow out back safety pattern case  
 Stainless steel wetted parts  
 Case size 2 1/2", 4" & 6"



**52 Series 8800**  
**Process Gauges**  
 Solid front blow out back safety pattern case  
 Micrometer pointer  
 Field Fillable  
 Case size 4 1/2"



**54 Series 8900**  
**Liquid Filled Process Gauges**  
 Solid front blow out back safety pattern case  
 Micrometer pointer  
 Case size 4 1/2"



**56 Series 9510**  
**Precision Test Gauges**  
 Copper alloy wetted parts  
 Stainless steel case  
 Mirror Scale  
 Case size 6"



**58 Series 6000A/6210A**  
**Altitude Gauges**  
 Copper alloy wetted parts  
 Black steel case or Stainless steel liquid filled case  
 Case size 4"



**60 Series 6000ISS**  
**Internal Syphon Steam Gauges**  
 Copper alloy wetted parts with internal Syphon  
 Black steel case  
 Case size 2 1/2" & 4"



**62 Series 7510R/7520R**  
**Receiver Gauges**  
 Copper alloy or Stainless steel wetted parts  
 Stainless steel case  
 Case size 2 1/2", 4" & 6"



**64 Series 8800R**  
**Receiver Gauges**  
 Solid front blow out back safety pattern case  
 Micrometer pointer  
 Case size 4 1/2"



**66 Series NH<sub>3</sub> Gauges**  
**NH<sub>3</sub> Ammonia Gauges**  
 Stainless steel wetted parts  
 Stainless steel case  
 Case size 2 1/2" & 4"



**68 Series 5210**  
**Liquid Filled Mining Gauges**  
 Copper alloy wetted parts  
 Cast Brass case  
 Case size 2"



**70 Series 3A7620/3A7720**  
**3A Sanitary Gauges**  
 Stainless steel wetted parts  
 Stainless steel polished case & bayonet ring  
 Case size 2 1/2" & 4"  
 1 1/2" and 2" Tri-Clamp process connections

